

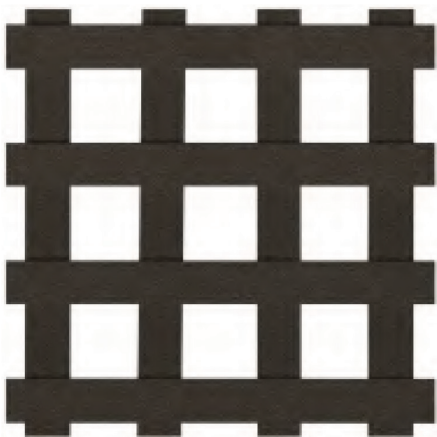
ALUMINUM 3D HIDDEN WELD LATTICE



Permalatt
Products, Inc.

SINCE 1997

ALUMINUM 3D HIDDEN WELD LATTICE



1-1/4" x 1/4" Slats, 1/2"
total thickness

Available in
2" square
4'x8' sheets

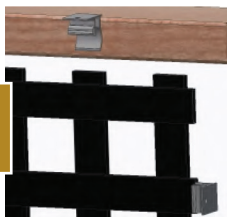
2" SQUARE OPENING SHOWN

Enhance your hardscape with Permalatt's Hidden Weld Aluminum Lattice. Robotically welded slats provide a stronger bond to the lattice. The welds are hidden within the slats offering a clean, finished look.

EASY 1-2-3 INSTALLATION

1. INSERT CLIP
IN SLAT
2. FASTEN CLIP
TO FRAME
3. SNAP COVER
OVER CLIPS.

1



2



3





HIDDEN WELD LATTICE

Permalatt's Hidden Weld Aluminum Lattice adds beauty and elegance and is a great investment to your home or business. This premium line of lattice is virtually maintenance free and comes with a Lifetime Limited Warranty.

POWDER COATING COLORS

The AAMA 2604 powder coating application is completed at our state of the art powder coating facility. We offer finishes in both satin & fine texture in the highest grade of powder coating. Colors shown are a close representation of the true color. Please consult actual samples for accurate powder coating colors.



TEXTURED COLORS

Black Fine



Bronze Fine



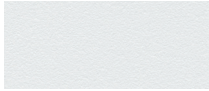
Brown Fine



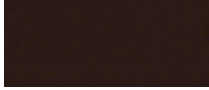
Grey Fine



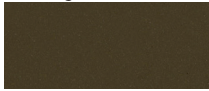
White



Chocolate



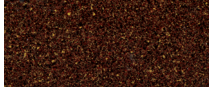
Ninety Bronze



Satin Black



Speckled Walnut



SATIN FINISH COLORS

LIFETIME LIMITED WARRANTY

Permalatt Products, Inc. warrants to the purchaser that its Aluminum Lattice is free of defects in workmanship and materials and that, in the course of normal and proper use, its Aluminum Lattice will not crack, peel, blister, flake, rust, nor be subject to abnormal weathering per **AAMA 2604 Specifications**.

This warranty covers:

Any defect in materials and workmanship.

This warranty will be effective:

For the lifetime of the owner of real estate upon which the material is installed. A warranty registration card must be completed and emailed to sales@permallatt.com, or mailed to Permalatt Products, Inc., P.O. Box 405, Bremen, Indiana 46506. The original owner will have 30 days to complete and return the registration card to be valid. A registration card can be requested in writing from Permalatt Products, Inc. at the above address or can be obtained from the Permalatt Products, Inc. website – permallatt.com.

This warranty applies to:

The purchasing owner. Proof of purchase must be provided. This is a Lifetime Limited Warranty.

The Lifetime Limited Warranty applies only to living entities. Non-living entities shall include but are not be limited to governments, municipalities, corporations, and commercial operations. All non-living entities shall receive a 30-year limited warranty from the date of purchase.

Warranty claim process:

Contact the dealer or distributor who sold or installed the Aluminum Lattice, or contact Permalatt Products, Inc., via mail (P.O. Box 405, Bremen, Indiana 46506), email (sales@permallatt.com), or phone (888-457-4342) within 30 days of discovering the claimed defect.

If Permalatt's Aluminum Lattice are found to be defective and covered by this warranty.

Permalatt Products, Inc. will provide replacement of the defective Aluminum Lattice, or at the sole discretion of Permalatt Products, Inc., will provide financial compensation equal to the original purchase price.

Warranty claim process continued:

Gloss Retention and Fade (Delta E) readings will be measured on a clean surface free of dirt, chalk, oxidized film or other contaminants per AAMA 2604.

Limitations and conditions not covered:

Damage caused by faulty installation, or from improper application (Permalatt Products, Inc. will provide installation guidelines upon request).

Damage attributable to fire, violent storms, earthquake or other Acts of God, accidents, vandalism, or other casualties, impact of objects, or exposure to atmospheric pollutants or conditions other than natural weather processes.

Damage or discoloration due to misuse, abuse, abrasion (including sand abrasion), and improper storage or to alteration of the material by paints, chemicals, or other substances not recommended for Aluminum Lattice.

Any part relative to gate mechanism and/or operators

Cost of installation or removal, freight, labor and similar costs.

Any incidental or consequential damages.

Installations where the atmosphere is influenced by bodies of salt water (or other contaminant conditions) must adhere to the cleaning guidelines specified at permallatt.com as modified from time to time.

Other considerations:

The manufacturer of this material does not recommend or approve this material for all possible end use applications. Your Local Code Authority should be consulted regarding its safety and applicability.



888-457-4342
PERMALATT.COM

