

LIMITED LIFETIME WARRANTY

Permalatt Products, Inc. warrants to the purchaser that its Aluminum Lattice is free of defects in workmanship and materials and that, in the course of normal and proper use, its Aluminum Lattice will not crack, peel, blister, flake, rust, nor be subject to abnormal weathering per **AAMA 2604** Specifications.

This warranty covers:

- Any defect in materials and workmanship.

This warranty will be effective:

- For the lifetime of the owner of real estate upon which the material is installed. A warranty registration form must be completed online on the Permalatt.com website. The original owner will have 30 days to complete the registration to be valid.

This warranty applies to:

- The purchasing owner. Proof of purchase must be provided. This is a Lifetime Limited Warranty.
- The Lifetime Limited Warranty applies only to living entities. Non-living entities shall include but are not be limited to governments, municipalities, corporations, and commercial operations. All non-living entities shall receive a 30-year limited warranty from the date of purchase.

Warranty claim process:

- Contact the dealer or distributor who sold or installed the Aluminum Lattice, or contact Permalatt Products, Inc., via mail (P.O. Box 405, Bremen, Indiana 46506), email (sales@permallatt.com), or phone 888-457-4342 **within 30 days** of discovering the claimed defect.
- If Permalatt's Aluminum Lattice products are found to be defective and covered by this warranty, Permalatt Products, Inc. will provide replacement of the defective Aluminum Lattice, or at the sole discretion of Permalatt Products, Inc., will provide financial compensation equal to the original purchase price.
- Gloss Retention and Fade (Delta E) readings will be measured on a clean surface free of dirt, chalk, oxidized film or other contaminants per AAMA 2604.

Limitations and conditions not covered:

- Damage caused by faulty installation, or from improper application (Permalatt Products, Inc. will provide installation guidelines upon request).
- Damage attributable to fire, violent storms, earthquake or other Acts of God, accidents, vandalism, or other casualties, impact of objects, or exposure to atmospheric pollutants or conditions other than natural weather processes.
- Damage or discoloration due to misuse, abuse, abrasion (including sand abrasion), and improper storage or to alteration of the material by paints, chemicals, or other substances not recommended for Aluminum Lattice.
- Any part relative to gate mechanism and/or operators.
- Cost of installation or removal, freight, labor and similar costs.
- Any incidental or consequential damages.
- Installations where the atmosphere is influenced by bodies of salt water (or other contaminant conditions) must adhere to the cleaning guidelines specified at permallatt.com as modified from time to time.

Other considerations:

- The manufacturer of this material does not recommend or approve this material for all possible end use applications. Your Local Code Authority should be consulted regarding its safety and applicability for intended usage.
- This warranty gives you specific legal rights, and you may also have other rights that vary from state to state.

THE WARRANTY STATEMENTS CONTAINED IN THIS LIMITED WARRANTY SET FORTH THE ONLY WARRANTIES EXTENDED BY PERMALATT PRODUCTS, INC. FOR ITS ALUMINUM LATTICE, AND THE PROVISIONS OF THIS WARRANTY SHALL CONSTITUTE THE ENTIRE LIABILITY OF PERMALATT PRODUCTS, INC. AND THE PROPERTY OWNER'S EXCLUSIVE REMEDY FOR BREACH OF THIS WARRANTY. NO OTHER WARRANTY, WRITTEN, MADE BY PERMALATT PRODUCTS, INC. OR ANY AGENT THEREOF, WHICH IS NOT CONTAINED OR AUTHORIZED HEREIN, WILL BE RECOGNIZED BY PERMALATT PRODUCTS, INC. 05/18

ALUMINUM 3D LATTICE



Photo courtesy of Decks and Patio Covers, Kingston, WA



888.457.4342
permallatt.com



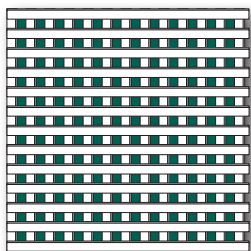
ABOUT PERMALATT'S ALUMINUM LATTICE & CHANNEL

PERMALATT ALUMINUM 3D LATTICE

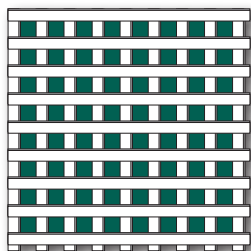
Permalatt presents what we believe will be an exciting future in dark "hardscapes" colors and shapes.

The powder coated aluminum slats are chemically bonded creating a 3D architectural grid work. The choice of either the 1" or 2" square opening pattern is available in 4'X8' or 4'X6' sheets.

OPENING PATTERNS



1" Opening

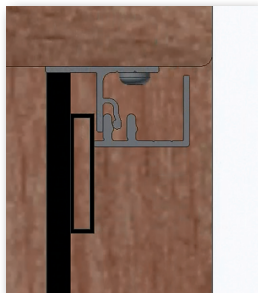
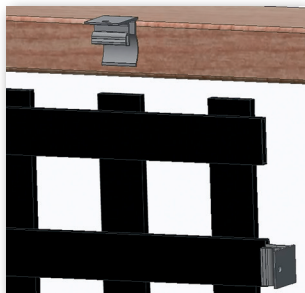


2" Opening

1-1/4" wide x 1/4" thick strips
produces a 1/2" total thickness

U-CHANNEL

Our aluminum U-channel has been designed for an easy installation and tight fit. Powder coated aluminum tabs fit into the slats and are nailed or screwed to the framing. The channel piece snaps into place leaving no visible fasteners.



POWDER COATING & CUSTOM GRID WORK

STATE OF THE ART POWDER COATING

We pride ourselves on our powder coating system which is the finest in the industry. Our powder coating is certified PCI 4000 and verified AAMA 2604 compliant and has a limited lifetime warranty.

STANDARD AAMA 2604 COLORS



Satin Black



Black Fine Texture

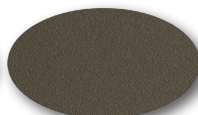


Gloss White

OPTIONAL AAMA 2604 COLORS



Ninety Bronze



Bronze Fine Texture



Brown Fine Texture



Speckled Walnut



Chocolate

Custom AAMA 2604 colors are available as special order.
AAMA 2605 colors are all special order.

*Colors shown are a close representation of the true color.
Please consult actual samples for accurate powder coating colors.*

CUSTOM GRID WORK

Custom aluminum grid work with various opening patterns is also available with tube sizes ranging from 5/8" - 3". Please contact customer service for a custom estimate.

